

Distributor for:

**kassow robots**  
strong · fast · simple

**SLS**

creating advantage  
for your success

Joining forces with

**rexroth**  
A Bosch Company

# EDGE Edition

The most compact cobot on the market.



Designed for  
**AGV & AMR**



Run directly with  
**DC connection**



**No external  
controller**

[www.slsbearings.com](http://www.slsbearings.com)

# EDGE Edition

Still 7 axes, still 5 models, **even more flexible.**



**The most compact solution on the market.**

All the power of the KR series with a **controller integrated into its base**. There is no longer a need for an external controller. The compactly designed Edge Edition makes it a **perfect fit for mobile solutions.**

Reach up to **1800 mm**

Payload up to **18 kg**

Joint speed up to **225°/s**

## The ideal solution for AGV & AMR applications.

Revolutionize your mobile solutions with our cutting-edge robotic companion. Its unparalleled compactness seamlessly integrates into any system, delivering efficiency and agility like never before.



**Direct DC connection and powered via battery**  
42VDC to 58VDC Remote Power On / Off control - to control cobot from AGV or PLC.

**Standard footprint**  
160x200mm Standard footprints  
Each models has the same base.

**Arm can run in automatic mode without Teach Pendant.**  
The arm can be configured to run in automatic mode without teachpendant once it's programmed.

*Pictures copyright - Morrell Group*

General specifications	KR810	KR1018	KR1205	KR1410	KR1805
Reach (mm)	850	1000	1200	1400	1800
Payload (kg)	10	18	5	10	5
Weight (kg)	26	36	27	37	40
Joint speed (deg/s)	225	163/225	225	163/225	163/225
Joint ranges (deg)	J2 and J4: -70°/+180°; J1, J3, J5, J6 and J7: ±360°				
Redundant absolute encoders on joints	Yes	Yes	Yes	Yes	Yes
Repeatability (mm)	+/- 0.03	+/- 0.03	+/- 0.03	+/- 0.03	+/- 0.04
Degrees of freedom	7	7	7	7	7
Footprint (mm)	160 × 200	160 × 200	160 × 200	160 × 200	160 × 200
Operating temperature (°C)	0-45	0-45	0-45	0-45	0-45
Body material	Aluminium				
Protection rating	IP54	IP54	IP54	IP54	IP54
Sound level (dB)	<65	<65	<65	<65	<65
Controller	KR810	KR1018	KR1205	KR1410	KR1805
Digital inputs dedicated E-stop & P-stop (Safety uses 2x I/Os for redundancy)	4	4	4	4	4
External 24V supply (A)	4	4	4	4	4
Digital inputs (Safety supported in pairs)	16	16	16	16	16
Configurable Digital inputs or outputs (Safety supported in pairs)	16	16	16	16	16
Analog Inputs, current/voltage	2	2	2	2	2
Analog outputs, current/voltage	2	2	2	2	2
Remote ON/OFF control	Yes	Yes	Yes	Yes	Yes



**CONTROLLER INTEGRATED INTO THE ROBOT BASE**



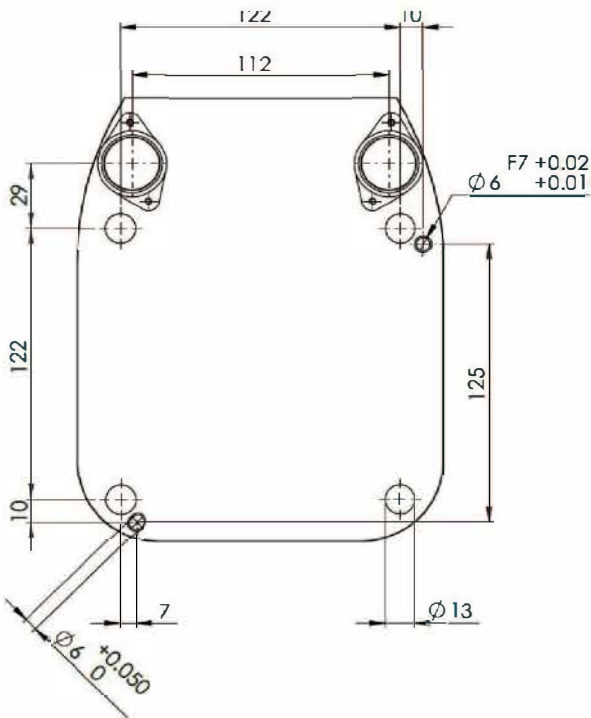
## Dimensions & special product features.

Solid construction reflected by an all-aluminum surface and very strong materials. Our five models offer an exceptional durability, ensuring optimal performance in any setting.

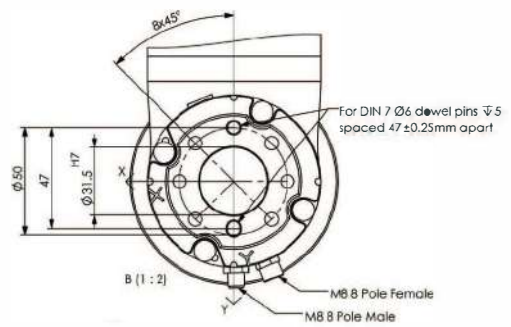
Designed to make set-up and programming easy and efficient. Our lightweight cobots can seamlessly be relocated and redeployed to different areas and applications. Even in super confined spaces thanks to its small footprint.

Power	KR810	KR1018	KR1205	KR1410	KR1805
Power consumption (with max. load; W)	400-600	400-1200	400-600	400-1200	400-1200
Power off consumption, remote ready (W)	0.5	0.5	0.5	0.5	0.5
System boot time (s)	20	20	20	20	20
System powered, no power arm (W)	30	30	30	30	30
Time to initialize arm (s)	2	2	2	2	2
Standstill power consumption, brakes applied (W)	65	65	65	65	65
Time to release brake (ms)	10	10	10	10	10
Standstill power consumption, brakes released (W)	75	75	75	75	75
Typical Cobot avg. power consumption, max payload (W)	200	200	200	200	200
Typical Robot avg. power consumption, max payload (W)	200	300	200	300	300
Supply voltage (VDC)	42-58	42-58	42-58	42-58	42-58
Max external fuse (A)	25	25	25	25	25

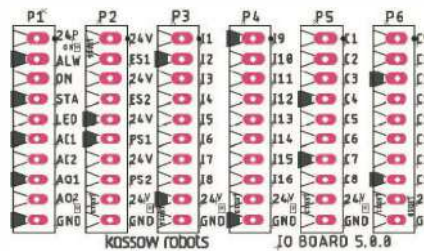
### DIMENSIONS OF THE BASE PLATE



### ROBOT HEAD & PORTS



### INSIDE CONNECTIONS



Contact us if you have any questions about our cobots or have specific projects in mind!



Contact us : (65) 6515 05151  
 Whatsapp us : (65) 9712 6202  
 Email us : [contact.us@slsbearings.com.sg](mailto:contact.us@slsbearings.com.sg)